



EAST VIEW



NORTH VIEW



SOUTH VIEW

FARRINGTON ROAD  
ADAPTIVE REUSE PROJECT:  
PLAZA RESURRECTION



ARCHITECTURAL GRAPHICS  
SPRING 2012 PROF. LOBAS

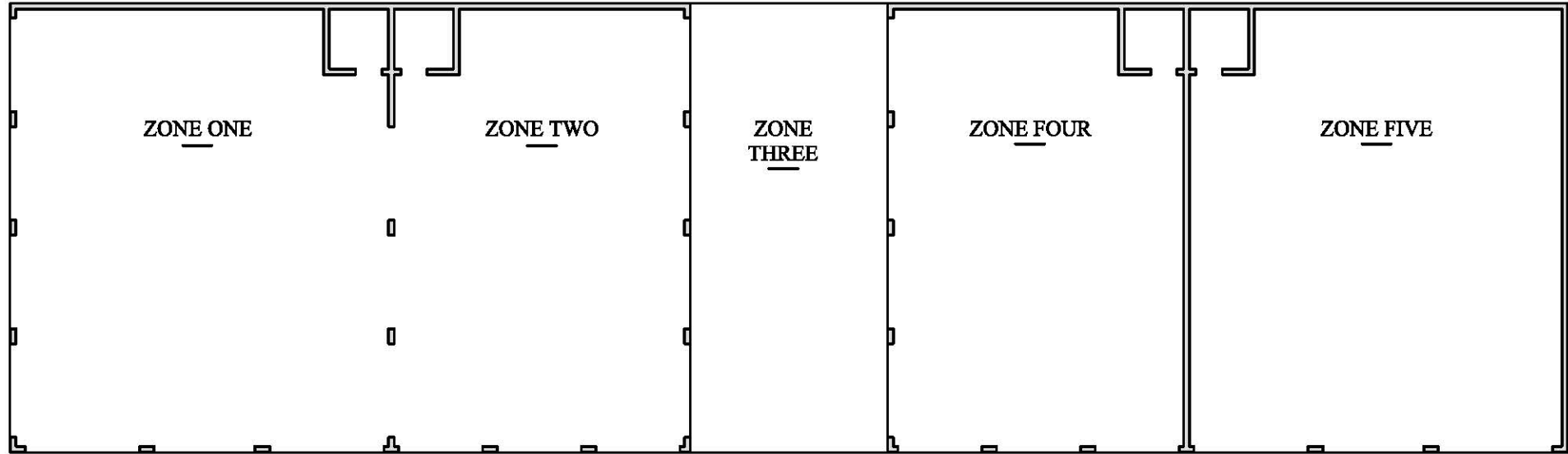


WEST VIEW

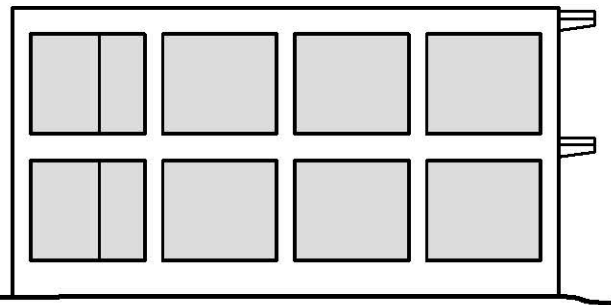
FARRINGTON ROAD  
 ADAPTIVE USE PROJECT:  
**PLAZA**  
**RESURRECTION**  
 ARCHITECTURAL GRAPHICS  
 SPRING 2012 PROF. LOBAS

SQUARE FOOTAGE	
ZONE ONE:	1675 SF
ZONE TWO:	1305 SF
ZONE THREE:	885 SF
ZONE FOUR:	1305 SF
ZONE FIVE:	1675 SF
TOTAL, MAIN LEVEL:	6845 SF

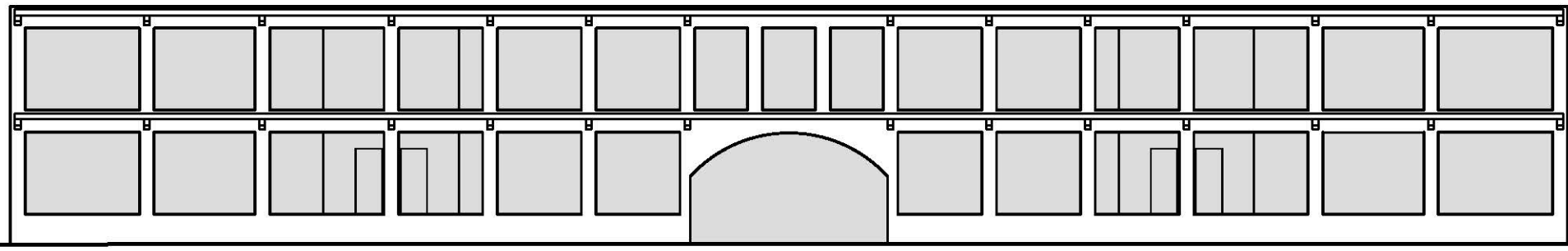
WALL SCHEDULE	
ALL EXTERIOR AND INTERIOR WALLS ARE CONCRETE MASONRY UNITS UNLESS NOTED OTHERWISE	
	EXISTING WALL
	NEW WALL



**MAIN LEVEL FLOOR PLAN**  
 SCALE: 1/16" = 1'-0"



**NORTH ELEVATION**  
 SCALE: 1/16" = 1'-0"



**EAST ELEVATION**  
 SCALE: 1/16" = 1'-0"

FARRINGTON ROAD - ADAPTIVE RE-USE PROJECT:

# PLAZA RESURRECTION \* MIDTERM

ARCHITECTURAL GRAPHICS

THE COLLEGE OF THE BAHAMAS

SPRING 2012

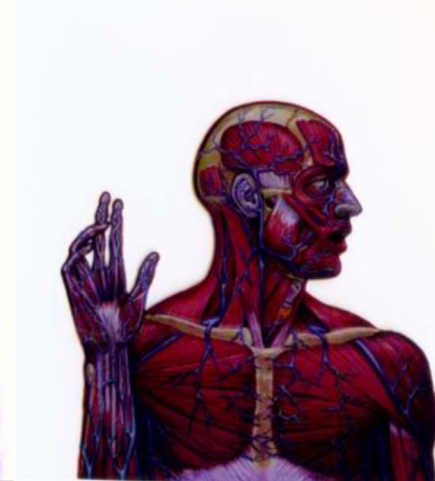
PROF. LOBAS



LONGITUDINAL SECTION



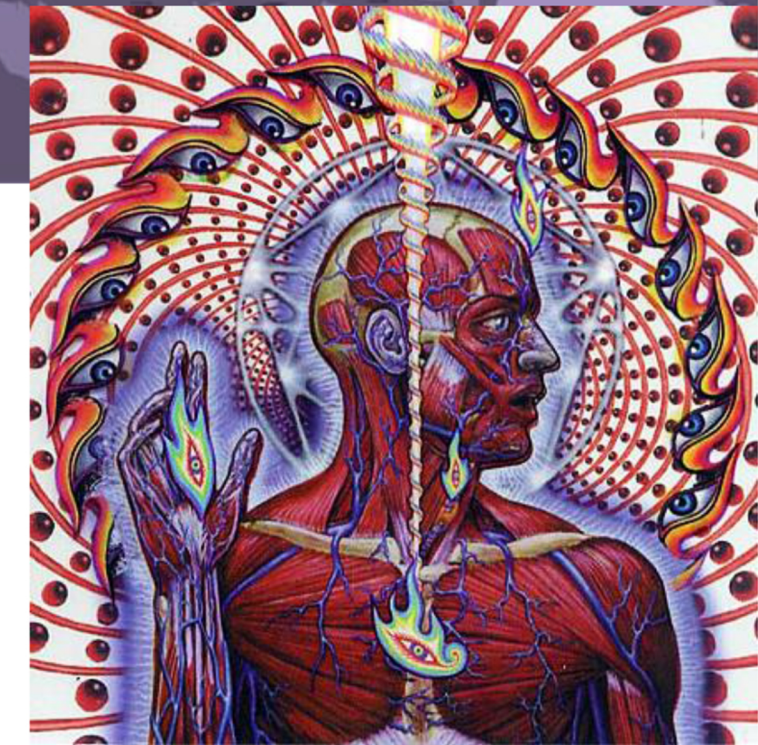
ORGAN AND TISSUE VIEW



MUSCLE AND NERVOUS SYSTEM



SKELETAL AND SPIRITUAL



AWAKENED HUMAN BEING WITH ALL CHAKRAS ALIGNED

**NEXT PHASE SHALL ENTAIL** 1) A full analytical exploration of our project site in model format  
2) A preparation of the building body for its transformative process / process of resurrection

**YOUR DUE DATE IS:  
29 FEBRUARY 2012**

**AS-BUILT (AND AS-ABANDONED) MODEL** Afternoon Class / Section 2: These shall prepare a model of our building with the following specifications:  
A) Scale of 1/4" = 1'-0". B) Base to be size of site, to scale, of cardboard with wood beneath C) Topographic delineations to be approximate, see site.  
D) All concrete and block to be represented with cardboard E) All wood and metal represented with same material, to scale F) Foliage representation TBD  
This model will thus be a **finished piece**, to be used as a study for comparison and contrast with the adaptive reuse / design model described below.

**ADAPTIVE RE-USE DESIGN BASE MODEL** Morning Class / Section 1: These shall prepare a similar model of the concrete and concrete block building as though it were completed. The only caveat to this model is thus: you must be able to **COMPLETELY DISASSEMBLE IT**. That's right. The model shall be of a modular design, a kit-of-parts with similar sized pieces. This way, in our next phase, you can each remove and replace pieces to represent your final designs. This model thus is not a finished piece, but truly a **work in progress**. However, it must be sturdy, elegant, and a work of perfect craft and artisanship.

**CONCEPT IMAGES AND SKETCH** Students in Both Classes – Individual Project This is to begin your creative gears spiralling for the final project. Gather **THREE** concept images, ideas for a new use for our derelict structure. Sketch, freehand, lines only and without shading, an interpretation of a new entity that includes elements and expressions present in these three images. The sketch need not be entirely representational or realistic, nor need it relate to our site. It should be intricate, complicated, and reveal an intense body of thought, interpretation, analysis. It should be on 18 x 24 sketch paper and in graphite or ink.



FARRINGTON ROAD  
ADAPTIVE REUSE PROJECT:  
PLAZA RESURRECTION

ARCHITECTURAL GRAPHICS  
SPRING 2012 PROF. LOBAS

